



## Rising to the Occasion

We've taken our legendary Thai hospitality to a whole new level, combined it with breathtaking views, luxuriant suites and celebrated restaurants and bars. The result is an indulgent five-star hotel experience where every occasion is unforgettable and every moment award-winning.

lebua's 136 expansive and elegantly-appointed suites, each with separate bedroom and living room, offer spectacular city and river views from their balconies high above Bangkok's vibrant sightseeing, shopping and business districts. From its prime location near the Chao Phraya River, BTS SkyTrain and expressway, the entire city is within reach, with many attractions just minutes away.

Indulgence pervades the air as your every personal and professional need is attended to with unwavering, unobtrusive service. We take care of the details, so you can savor the moments – and award-winning moments await at every turn

## Location:

- On the corner of Charoen Krung and Silom Roads, a short stroll from the Chao Phraya River
- 40-minute drive to Suvarnabhumi International Airport
- 15-minute drive to the MRT (3 kms)
- 10-minute walk to the BTS Sky Train Saphan Taksin station
- 10-minute walk to convenient shuttle ferries
- Easy access via expressways that connect north and south Thailand

## Room Features

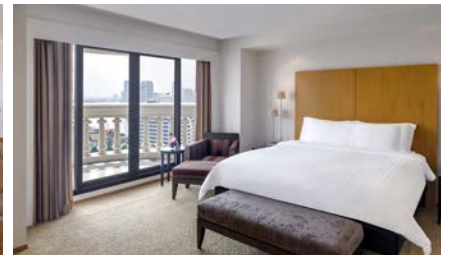
- Coffee machine & tea-making facilities
- Hair dryer
- High-speed wired & wireless Internet
- Iron & ironing board (on request)
- Mini-bar
- Personal safe
- Telephone with voicemail
- TV & DVD player

## Additional Services

- Babysitting (24 hours' notice)
- Concierge
- Daily turndown service
- Doctor on call (24 hours)
- In-suite dining (24 hours)
- Laundry & dry cleaning
- Limousine service
- Shoeshine service on request
- Shuttle bus to BTS Sky Train from 7am to 5pm
- Valet parking

## Accommodation

Suite Categories	Area (m <sup>2</sup> )
Superior Suite	66
Riverview Suite	66
2-bedroom Executive Suite	176-186
3-bedroom Executive Suite	266



## Facilities

### Fitness Center & Swimming Pool (M Floor)

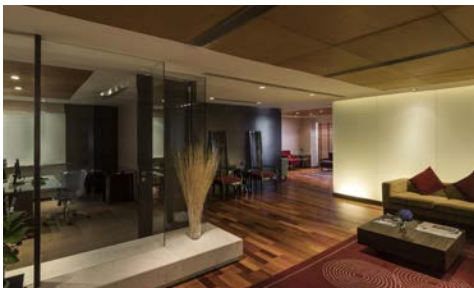
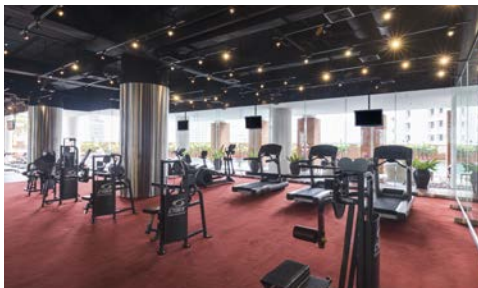
Overlooking an open-air pool, lebua's fitness center offers a range of modern exercise fitness equipment, elegant sauna, steam room and spa treatment rooms.

### Business Center (51<sup>st</sup> Floor)

State-of-the-art business center provides total solutions and support for the executive, from internet connection, message, mail and postal services, to personalized secretarial and administrative assistance and conference rooms.

### Café Mozu (M Floor)

Live from poolside, Café Mozu serves authentic yet contemporary Indian, Western, Italian and Thai cuisine prepared by chefs from each region.



## Conferences & Functions



Tower Club at lebu a's accessibility in the center of the city, wide choice of function rooms and bathrooms that can accommodate up to 700 guests, and exceptional catering from the award-winning restaurants at The Dome, have made it downtown Bangkok's venue of choice for every occasion, from wedding and social galas, to product launches and staff parties, fashion shows and press conferences.

The legendary city and river views, lavish handpicked flower arrangements, winding staircases and hanging chandeliers make a timeless and elegant statement, and every occasion unforgettable.

LEVEL	FUNCTION ROOMS	DIMENSIONS	AREA (SQ.M)	HEIGHT (SQ.M)	THEATRE	CLASSROOM	U-SHAPE	COCKTAIL	BUFFET	BANQUET
1	Malika (M Floor)	9m x 13.5m	120	4	50	30	25	50	30-40	50
	Kamala	9m x 9m	80	4	30	24	15	30	30	30
	Nalini	9m x 9m	80	4	30	24	15	30	30	40
	Pushkara Ballroom	27m x 13.5m	525	4	200	100	70	300	150	150
2	Aravinda (M Floor)	22.5m x 13.5m	390	4	200	100	70	300	150	120
	Padmini	9m x 9m	80	4	30	24	15	30	10	30
	Padmana	4.5m x 7m	30	4	20	-	-	-	-	10
	Padmavati	13.5m x 9m	120	4	40	24	24	50-70	50	50
	Padma Ballroom	31.5m x 13.5m	245	4	150	70	60	300	150	150

## The World's First and Only Vertical Destination at the Iconic lebu a



### 52<sup>nd</sup> Floor BREEZE

A stunning alfresco restaurant with a wide selection of authentic Asian delicacies, spectacular river views and an adjacent bar for business or pleasure.

Open: Daily 06:00pm – 12:00am



### LEBUA NO.3

The world's tallest and Bangkok's newest upscale Gin, Caviar & Vodka Bar. The high-tech venue offers dance-stopping views of the city skyline and the Chao Phraya River.

Open: Daily 05:00pm – 01:00am



### 61<sup>st</sup> Floor CHEF'S TABLE

The art of cooking is placed at the very heart of the elegant and sumptuous dining experience. Guests float in the night sky with your own window on Bangkok... even in a sky of stars however, Chef's cuisine is still the star of the show.

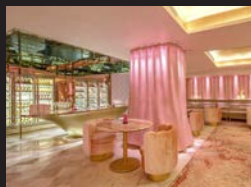
Open: Tuesday to Sunday 06:00pm – 01:00am



### 64<sup>th</sup> Floor FLÛTE A PERRIER-JOUËT BAR

The world's best al fresco Champagne bar, and that is what our connoisseurs say. With the Champagnes, exclusive epicurean delights and classic jazz tunes, this is the perfect place to start your evening.

Open: Daily 05:00pm – 01:00am



### PINK BAR

Intimate and feminine, romance and love mingle with the creative cocktails and bubbles. Featuring only the very best champagnes, bathed in pink the double height champagne cellar glistens invitingly and Bangkok glows seductively below.

Open: Daily 05:00pm – 01:00am



### DISTIL

Culinary mixology takes a slightly different form at Distil with tantalizing new flavors, textures and visuals that enhance every cocktail, making the experience unforgettable.

Open: Daily 05:00pm – 01:00am



### 63<sup>rd</sup> Floor SIROCCO

The sense of 'having arrived' at Bangkok's most iconic restaurant begins with the ascent to the top of lebu a and the walk down the artistically lit staircase, towards the poetic fountain.

Open: Daily 06:00pm – 01:00am



### ALFRESCO 64 - A CHIVAS BAR

Jutting majestically into the air is Alfresco 64, A Chivas Bar, touted as the highest outdoor whisky bar in the world.

Open: Daily 05:00pm – 01:00am



### SKY BAR

Suspended on a precipice 820 feet above Bangkok, Sky Bar is the world's highest bar of its kind. It's also the home of the famous Hangoverini, which was created for the cast of The Hangover Part II while they were filming at lebu a.

Open: Daily 04:00pm – 01:00am



### 65<sup>th</sup> Floor MEZZALUNA

This Michelin two star restaurant, is the piece de resistance of lebu a's food and beverage outlets, with a stunning 180-degree city and river views, rivaled only by the masterful culinary presentations placed before you.

Open: Tuesday to Sunday 06:00pm – 01:00am

## lebu a Hotels and Resorts

lebu a Hotels and Resorts is an international luxury brand that operates distinct hotels, fine restaurants, and stunning bars. The company's lodging collection features Bangkok's best-performing luxury hotels (Tower Club at lebu a and lebu a at State Tower), magnificent properties in India (lebu a Lucknow and lebu a Corbett), and an exclusive property in New Zealand (Lake Okareka Lodge by lebu a).